

Case Report

Single Coronary Artery: Angioplasty with Stent Implantation

Ian C. D. Teixeira, Alexandre X. Brant, Alexandre Ares, Bruno Sarbi, Isaac Moscoso, Adnan A. Salman, Salvador A. B. Cristóvão, João B. Oliveira Neto, Maria Fernanda Z. Mauro, José A. Mangione
São Paulo, SP - Brazil

We report the case of a rare anomaly of the right coronary artery originated from the middle third of the left anterior descending (LAD) coronary artery with a proximal atheromatous obstructive lesion immediately before the emergence of the right coronary artery (RCA). The patient underwent successful angioplasty with stent implantation in the left anterior descending coronary artery. Only 7 cases of this anomaly of distribution have been reported in the literature, but none of them was treated with percutaneous revascularization.

Anomalies of the coronary arteries occur in 1 to 2% of the population, constituting a rare, but important, type of nonatherosclerotic coronary artery disease. These anomalies may cause sudden death on exertion and increase the risk of coronary arterial trauma during surgical procedures. In addition, certain types of anomaly may lead to myocardial ischemia¹.

The single coronary artery (SCA), described as an isolated coronary artery, has no gender predominance, being a rare entity with an incidence of 0.024% when isolated, and of 0.03 to 0.04% when associated with other cardiac abnormalities²⁻⁴. Its main characteristic is being originated from the aortic root through a single ostium, with no evidence of a second ostium, being then responsible for the irrigation of the entire heart, independently of its distribution². In these cases, proximal atherosclerotic obstructions may have severe consequences for the patient⁴.

We report the case of a patient who underwent percutaneous coronary intervention with stent implantation and whose RCA originated from the LAD. The cases of only 7 patients with that anomaly have so far been reported in the literature, but none of them was treated with coronary angioplasty⁵.

Case Report

The patient is a 73-year-old, white, male, retired lumberjack, born and residing in the town of Maria da Fé, in the state of Minas Gerais. The patient has type II diabetes, hypertension and quit smoking 20 years earlier. He was referred to our service for

coronary angiography due to a one-year history of oppressive chest pain on exertion, which irradiated to the left upper limb, was relieved with rest, and had no aggravating factors. The patient reported that in the preceding 2 months the pattern of the chest pain evolved progressively until being triggered at rest.

On physical examination, the patient had no alterations, except for his cardiac auscultation, which had a regular cardiac rhythm with the presence of S4. The chest teleradiography was normal. The rest electrocardiogram (fig. 1) showed a sinus rhythm, SÂQRS +70°, heart rate of 75 bpm, with no ventricular repolarization alterations. During the exercise test (fig. 2), a significant 3-mm depression of the ST segment was observed on the MC5 lead with a load of 1.7 mph 10% at 3 minutes, characterizing an ischemic myocardial response to exercise.

The patient underwent coronary angiography according to the Sones technique on July 14th, 2003, which revealed a LAD originating from the left Valsalva sinus, and dividing into the 2 following arteries: the circumflex artery, which reached the distal third of the left atrioventricular sulcus with obstructive lesions of 90% in the distal third and of 80% in the proximal third of a small posterior ventricular branch; and the LAD, which reached the middle third of the posterior interventricular sulcus with an obstructive lesion of 90% in the proximal third. The RCA originated right after that obstruction and had smooth walls with no obstructive lesions (fig. 3 and 4). The left ventriculography showed an increase in the end-systolic volume due to moderate anteroapical hypokinesia (fig. 5).

Because the lesion in the LAD jeopardized a large myocardial area, the patient was medicated with acetylsalicylic acid (200 mg/day) and clopidogrel (300 mg in an attack dose). Twenty-four hours after coronary angiography, percutaneous coronary intervention (PCI) in the lesion of the LAD was performed through the femoral access, using a 2.5x20 mm balloon catheter for predilation of the lesion, followed by implantation of a 3.5x12mm AVE S7 stent with a final deployment pressure of 12 atmospheres. The procedure was successfully performed, resulting in TIMI III coronary flow, and 0% residual lesion (fig. 6).

The in-hospital evolution was uneventful, and the patient was discharged 24 hours after the intervention.

Discussion

Coronary anomaly is an anatomical entity, which, most of the time, is associated with a certain congenital heart disease, and



Fig. 1 - Electrocardiogram at rest.

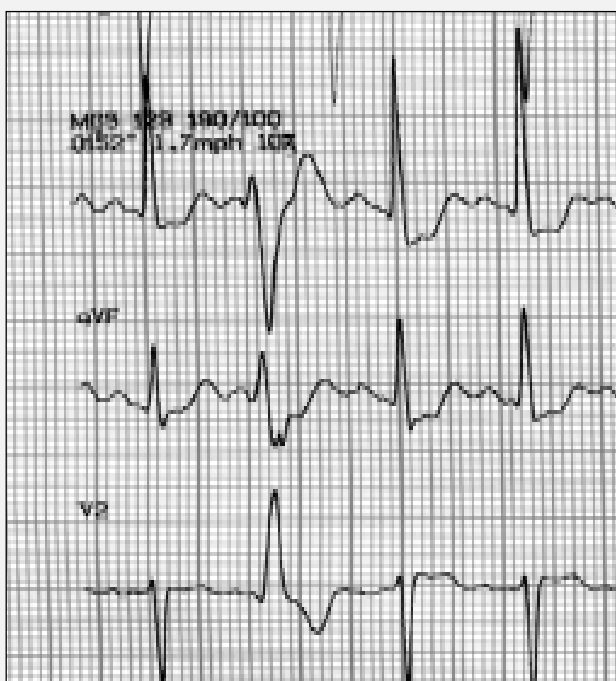


Fig. 2 - Positive exercise test for ischemia.

no difference in its incidence is observed between genders. It may be classified into 3 types: anomalies of origin, anomalies of termination, and anomalies of distribution (the case reported) ⁶.

Coronary anomalies of origin are those in which the coronary system is at least biarterial, with one coronary artery emerging from a large vessel or from another coronary. The most common anomaly, corresponding to 90% of the cases of this anatomical alteration, is the circulation pattern in which the LAD emerges from the pulmonary trunk ⁶.

One modification of that pattern is the emergence of the left coronary artery from the pulmonary trunk (2.5 to 4.6% of congenital heart diseases). Although reported by Brooks in 1886, Bland,

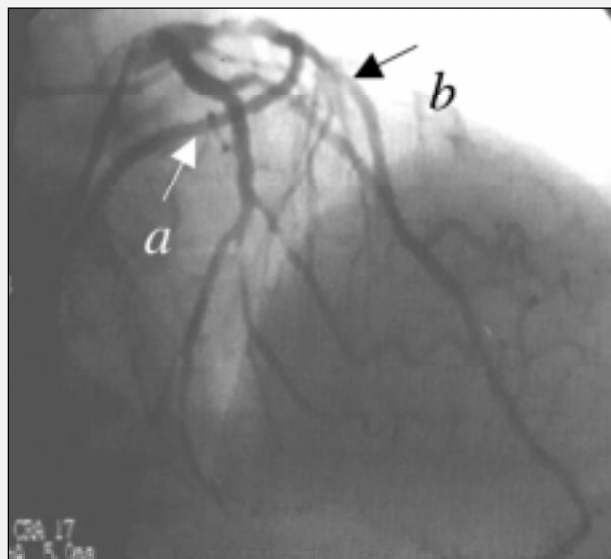


Fig. 3 - Coronary angiography on cranial RAO projection, showing RC (a) originating from the AD (b).

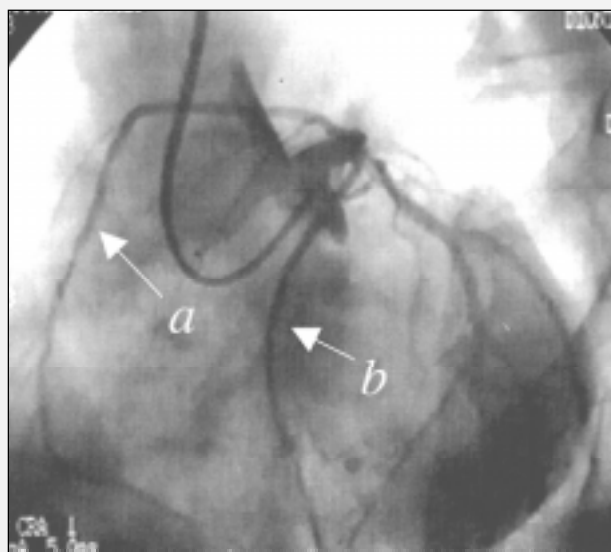


Fig. 4 - Coronary angiography on caudal LAO projection, showing RC (a) originating from the AD (b).

White, and Garland, in 1933, reported for the first time the clinical and hemodynamic syndrome. In more than 90% of the cases, the left coronary artery emerges from the posterior sinus of the pulmonary artery ⁷. Its physiopathology was established by Edwards ⁸, who reported the existence of RCA collaterals to the left coronary artery, and the occurrence of a possible left-right shunt. The most common symptom is angina pectoris, due either to the lack of appropriate collaterals or to the phenomenon of "flow steal" to the pulmonary trunk. If the individual lives beyond childhood, the risk of sudden death persists in up to 80 to 90% of the cases, occurring around the age of 35 years ⁶.

Most cases of anomaly of origin cause a reduction in survival, except for the origin of the RCA from the pulmonary trunk, a more rare form, which usually has benign prognosis ⁶.

The more used surgical techniques for the treatment are as follows: simple reimplantation of the coronary artery; ligation of the coronary artery followed by saphenous bypass; the technique of the tunnel by Takeuchi; and ligation of the anomalous coronary artery, performed only when sufficient collateral circulation exists,

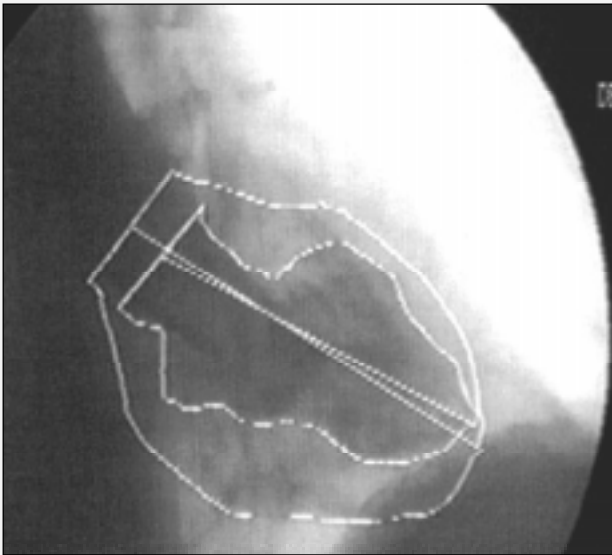


Fig. 5 - Left ventriculography on RAO projection.

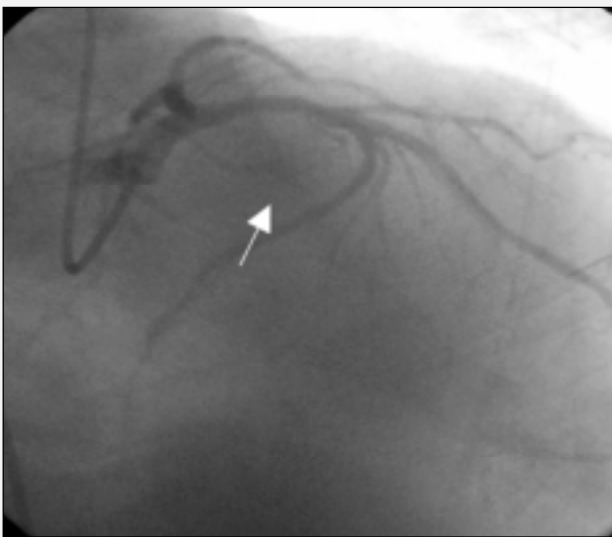


Fig. 6 - Cranial RAO projection - Final result of stent implantation in AD (arrow).

presenting worse prognosis in the short and long run, because it results in a single coronary system ⁶.

Coronary anomalies of termination are the most common hemodynamically significant coronary anomalies, the arteriovenous coronary fistulae (AVCF) being one example.

The AVCF, reported for the first time by Krause in 1865, is defined as a direct precapillary anastomosis between a larger coronary artery and a cardiac chamber or another larger vessel, such as the coronary sinus, superior vena cava, or pulmonary trunk ⁷.

The right coronary artery and right ventricle are more commonly involved. Drainage to the left chambers is rare (less than 10% of cases), the coronary sinus and bronchial veins being the most rare sites of drainage ⁶.

Angina pectoris is the most common symptom, resulting from the left-right "flow steal", which diverts blood from the high resistance system of the myocardial capillary bed to the low-pressure system of the fistulae ⁷.

Indication for surgical correction depends on the degree of the shunt, and aims at occluding the AVCF with no hindrance to the

coronary flow. The most used techniques are as follows: inner closure of the fistulae from the recipient cavity; laterolateral tangential arteriorrhaphy (Cooley and Ellis, 1962); simple distal coronary ligature (Bjork and Crafoord, 1947); proximal and distal coronary ligature; and ligature with the use of bypass.

If the surgical treatment is not performed when indicated, the probability of complications, such as congestive heart failure, bacterial endocarditis, and, rarely, moderate pulmonary hypertension, increases with age. Cases of aneurysmatic dilation of the involved vessel and rupture of the fistulae have also been reported ⁹.

The single coronary artery (SCA), is an extremely rare anomaly, with an incidence of 0.04% ². It is associated with a congenital heart defect (as tetralogy of Fallot, transposition of the great vessels, truncus arteriosus) in 40% of cases ⁶.

The single coronary artery was considered a variation of the normal until the 18th century. In 1716, Thebesius reported for the first time a case of SCA, which was finally considered an anomaly in 1761, when Morgagni recognized as normal the presence of 2 major coronary arteries (2 ostia). Only 45 cases of single coronary artery had been reported until 1950 ¹⁰.

The incidences of the anomaly of the right coronary artery RCA and of the left coronary artery LCA are similar ⁶. However, the even rarer pattern of occurrence of SCA is that of the RCA originating from the LAD, which has only 7 cases reported in the literature ⁵. In all cases, the RCA originated from the LAD after the first septal perforating branch, with an anterior trajectory to the right ventricular outflow tract and to the pulmonary trunk. Four cases had evidence of atherosclerotic coronary artery disease, but percutaneous revascularization was not performed in any of them ¹⁰.

The prognosis of SCA ranges from excellent (without a decrease in survival) to poor, according to its anatomical distribution, including the risk of sudden death, because 15% of the individuals with that anomaly develop severe heart disease before the age of 40 years. This risk is justified by the trajectory of the anomalous coronary artery on the cardiac base to reach its territory of distribution, which may expose the coronary artery to compression by other structures or angulation of its origin. In regard to developing atherosclerosis, a single coronary artery is considered at higher risk than normal coronaries are ^{2,4,6,8,9}.

When atherosclerotic coronary artery disease develops, the consequences are significant, and the prognosis is severe if the obstruction is proximal, because the ostium is single and no possibility of collateral circulation exists ⁶.

The indication of revascularization should be considered in the presence of symptoms (ie, angina), even in the absence of atherosclerotic coronary artery disease, due to the considerable chance of acute myocardial infarction and sudden death ⁷.

In conclusion, we report the case of an anomaly of coronary distribution with RCA originating from the proximal third of the LAD, the rarest type reported in the literature, right after a significant atherosclerotic lesion, jeopardizing a large area of myocardial musculature. It is worth emphasizing the significant role played by coronary angiography in this context, accurately defining the coronary artery anatomy and allowing a successful percutaneous treatment with stent implantation and excellent in-hospital evolution, despite the severity of the case of this rare anomaly.

References

1. Engel HJ, Torres C, Page L Jr. Major variations in anatomical origin of the coronary arteries: angiographic observations in 4,250 patients without associated congenital heart disease. *Cathet Cardiovasc Diagn* 1975; 1:157-69.
2. Sharbaugh MJAH, White RS. Single coronary artery: analysis of the anatomic variation, clinical importance, and report of five cases. *JAMA* 1974; 230:243-6.
3. Click RL, Holmes Jr DR, Vliestra RE, et al, and participants of the CASS – Anomalous coronary arteries: location, degree of atherosclerosis and effect on survival – a report from the Coronary Artery Surgery Study. *J Am Coll Cardiol* 1989; 13:531-7.
4. Lipton MJ, Barry WH, Obrez I, et al. Isolated single coronary artery: Diagnosis, angiographic classification, and clinical significance. *Radiology* 1979; 130:39-47.
5. Iyisoy A, Kursaklioglu H, Barcin C, et al. Single coronary artery with anomalous origin of the right coronary artery as a branch from the left anterior descending artery: a very rare coronary anomaly. *Heart Vessels* 2002; 16:161-3.
6. Fernandes ED, Kadivar H, Hallman GL, et al. Congenital malformations of the coronary arteries: the Texas Heart Institute Experience. *Ann Thorac Surg* 1992; 54:732-40.
7. Levin DC, Fellows KE, Abrams HL. Hemodynamically significant primary anomalies of the coronary arteries: angiographic aspects. *Circulation* 1978;58:25-34.
8. Edwards JE. Symposium on cardiovascular diseases: functional pathology of congenital cardiac disease. *Pediatr Clin North Am* 1954; 1:13-49.
9. Ogden JA. Congenital anomalies of the coronary arteries. *Am J Cardiol* 1970; 25:474-9.
10. Moreira AELC, Meireles GCX, Silva MVB, et al. Artéria coronária única e infarto agudo do miocárdio. *Arq Bras Cardiol* 1996; v 66:225-28.