

Fig. 3 - Intraoperative transesophageal echocardiogram showing coronary ostia reimplanted to the Dacron vascular prosthesis. Left main coronary artery (LCA); Right coronary artery (RCA) (arrow).

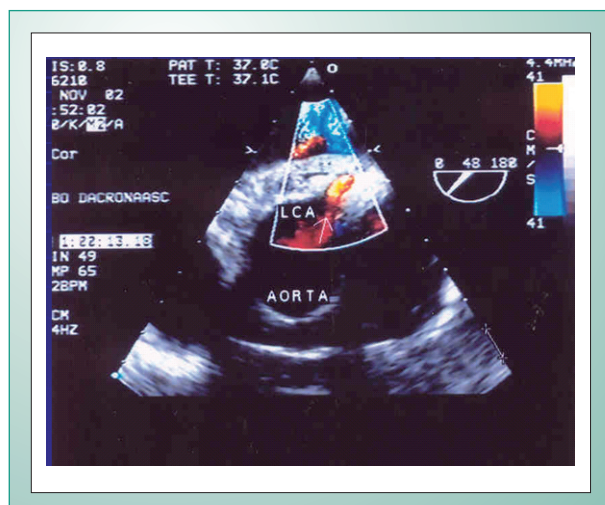


Fig. 4 - Intraoperative transesophageal echocardiogram showing blood flow in the left main coronary artery reimplanted to the vascular prosthesis (color flow mapping) (arrow).

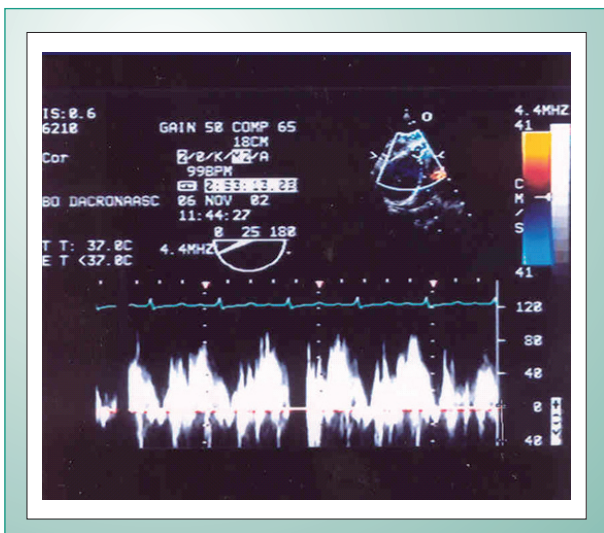


Fig. 5 - Intraoperative transesophageal echocardiogram showing blood flow in the left main coronary artery reimplanted to the vascular prosthesis (pulsed Doppler).